



# Prototyping deck

SKU: 114990115

Add a prototyping area to your Crazyflie 2.X and lift your electronics into the air. Just solder directly on the expansion board and plug it to the expansion port.



## 1. Introduction

The Prototyping deck has special pads to make it easier to solder, bridge and prototype new functionality. The deck also has a footprint where a 1-wire memory could be soldered to make the board auto-detectable by the firmware.

All the soldering pads are spaced with 2.54 mm.

## 2. Features

- Soldering pads support both through hole and SMD components
- Has SOT-23 footprint for 1-wire memory used for automatic detection (not mounted)

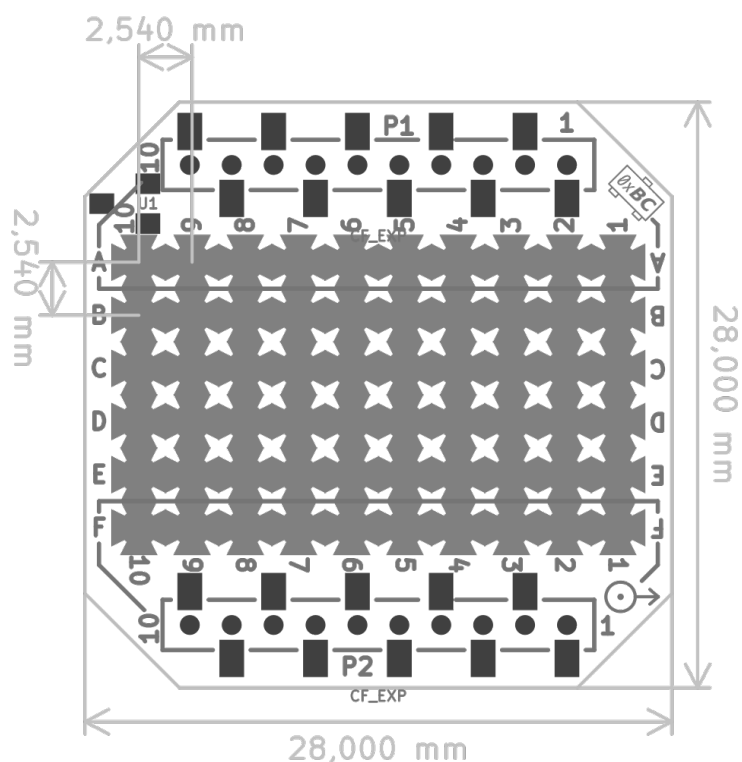
## 3. Electrical specification

- Makes all 20 pins in the Crazyflie 2.X expansion port available
- 40 pads for prototyping (supporting both through hole and SMD components)
- Footprint for optional 1-wire memory (not mounted)

## 4. Mechanical specifications

- Weight: 1.5 g
- Size (BxHxW): 28x28x4mm
- Designed for mounting above or under the Crazyflie 2.X

## 5. Mechanical drawing



## 6. Package contents

- 1 x Prototyping deck

## 7. Errata

## 8. Hardware revisions

Revision	Comment
C1	Updated screenprint from bitcraze.se to bitcraze.io
C	Adjusted expansion connector footprint for production
B	Initial release

## 9. History

Version	Comment	Date
1	Initial release	2020-04-01